

USB Interface Communication for C Series MFC and P Series Pressure Controllers

Required Documents – USB Windows 10 USB Driver Folder

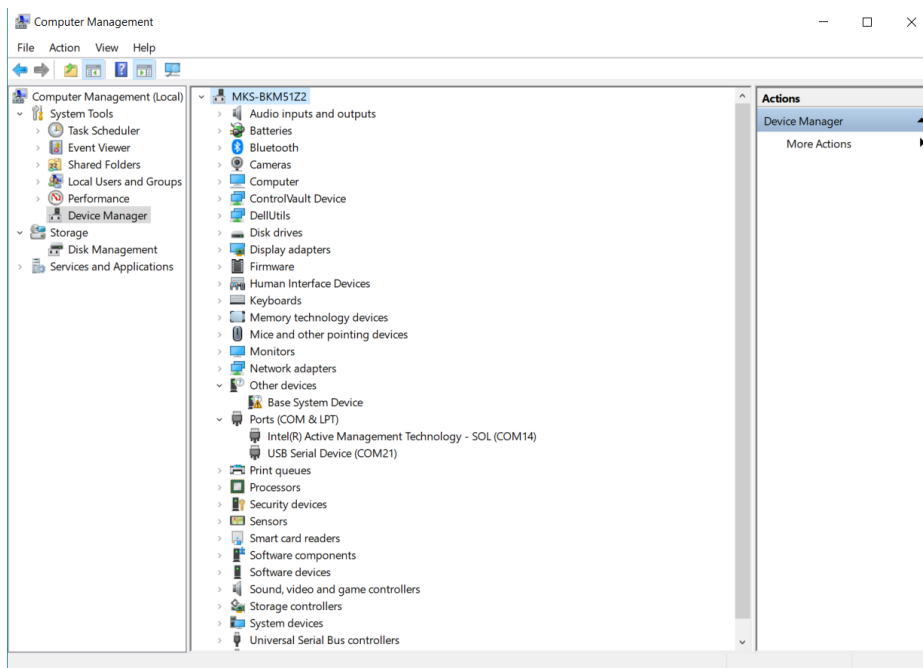
1. Where to put the Driver Folder:

- Drop the unzipped folder on the desktop of the laptop or computer

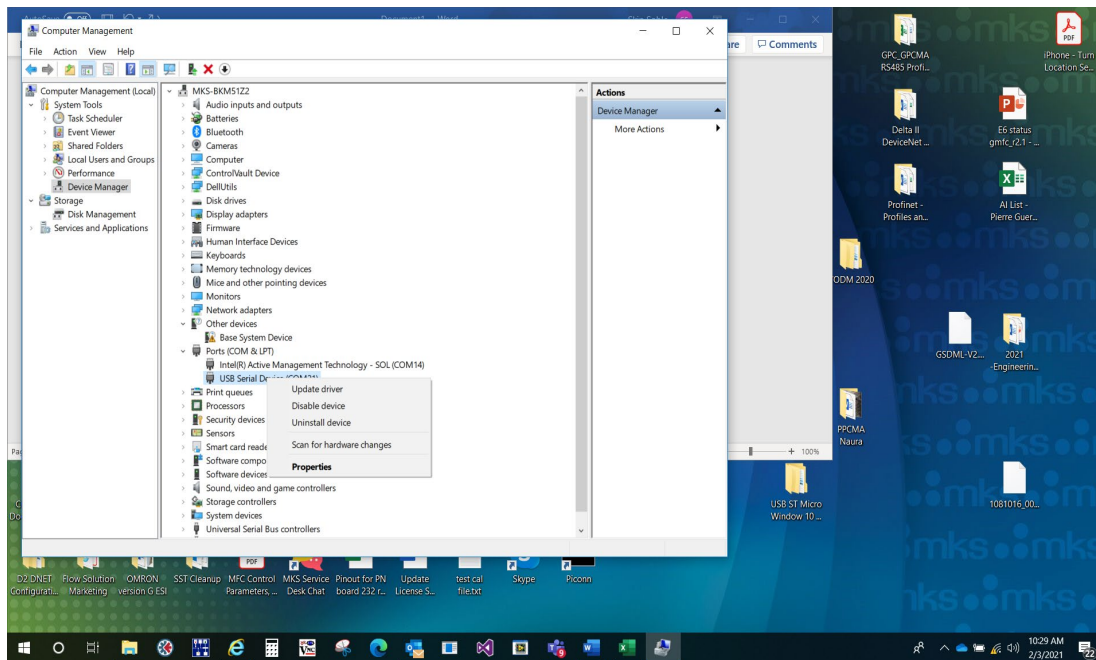


2. Installing the USB Driver:

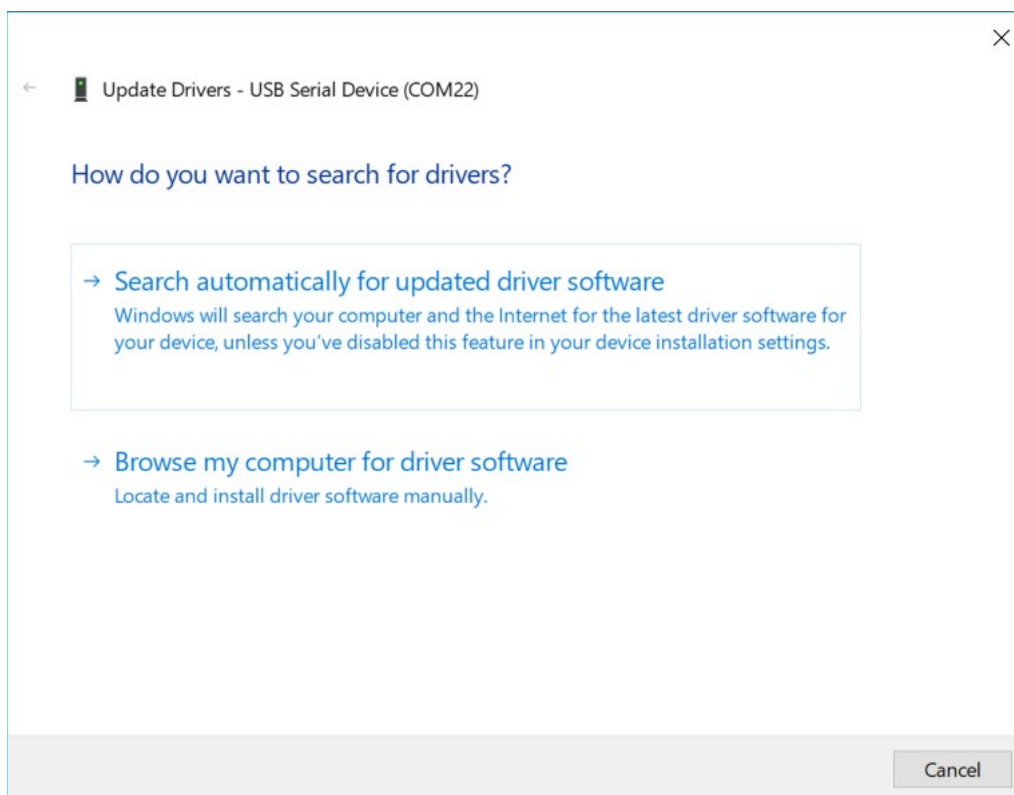
- Communication with the MKS Device Web Browser is done by connecting a computer and the device via a usb to micro-usb connection.
- When the device is first connected to the laptop it will appear as a <Serial Device>. For communication purposes the connection needs to be a <Network Adapter>. The following information shows the steps to load the driver to accomplish that task.



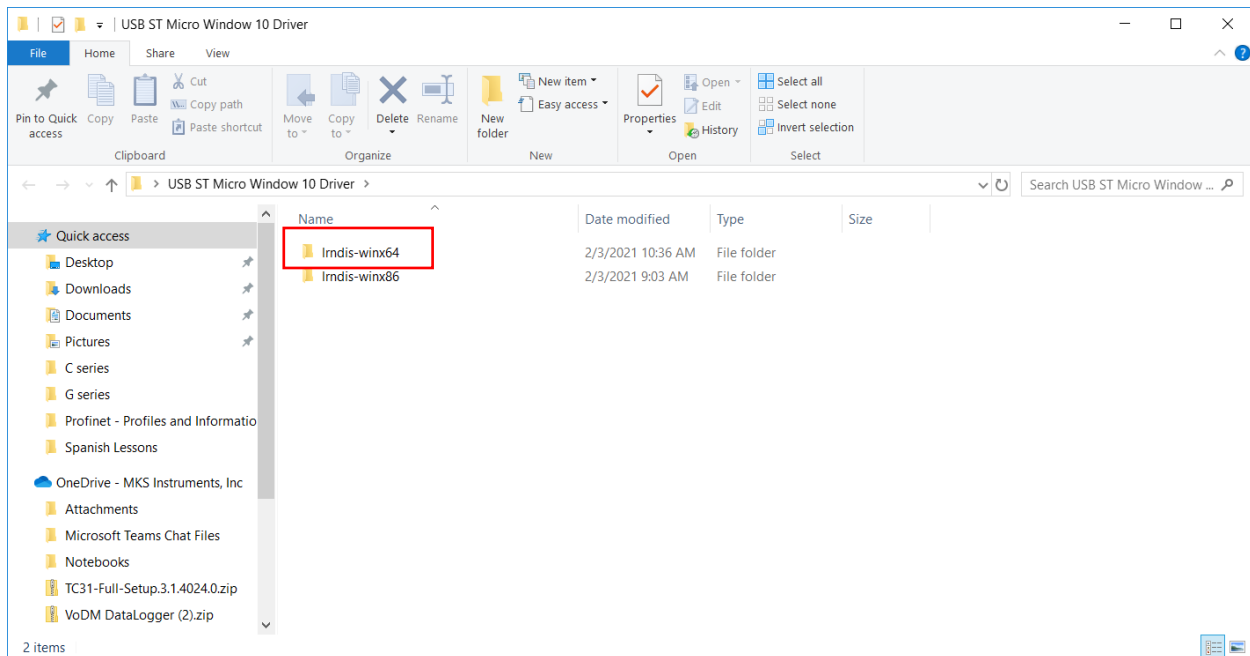
- Write click and select update Driver



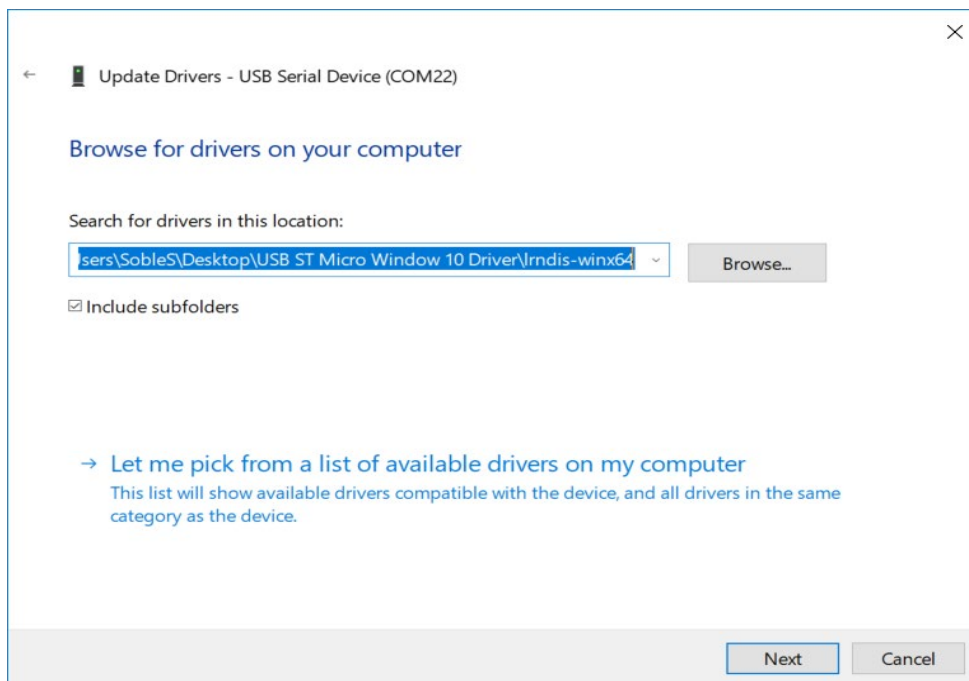
- Select <Browse my computer for driver software>

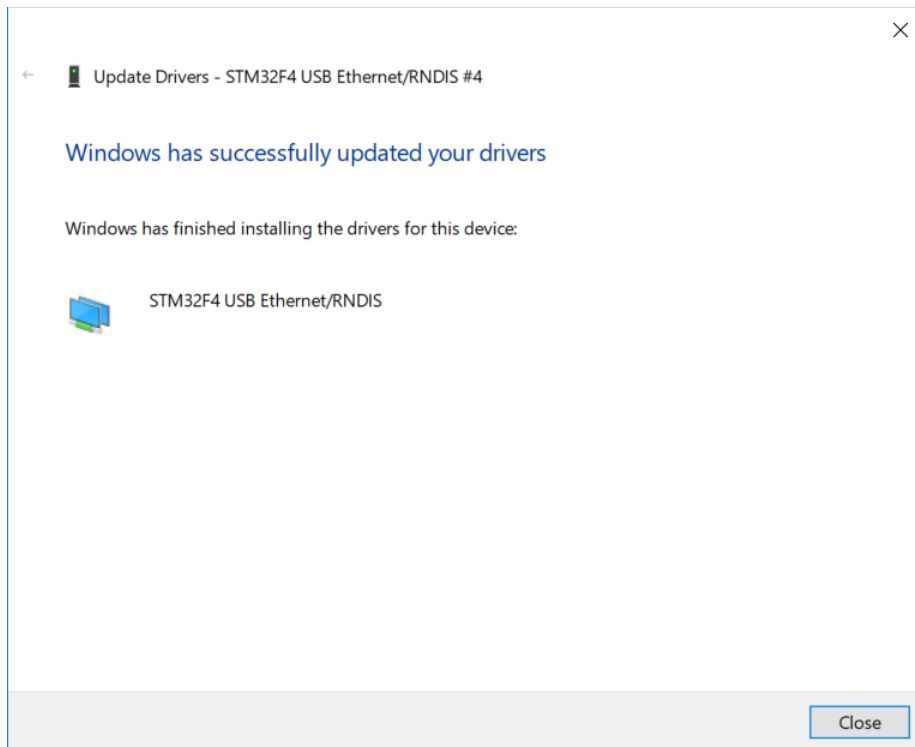


Find the folder on the desktop. Select the folder <Irdis_win64



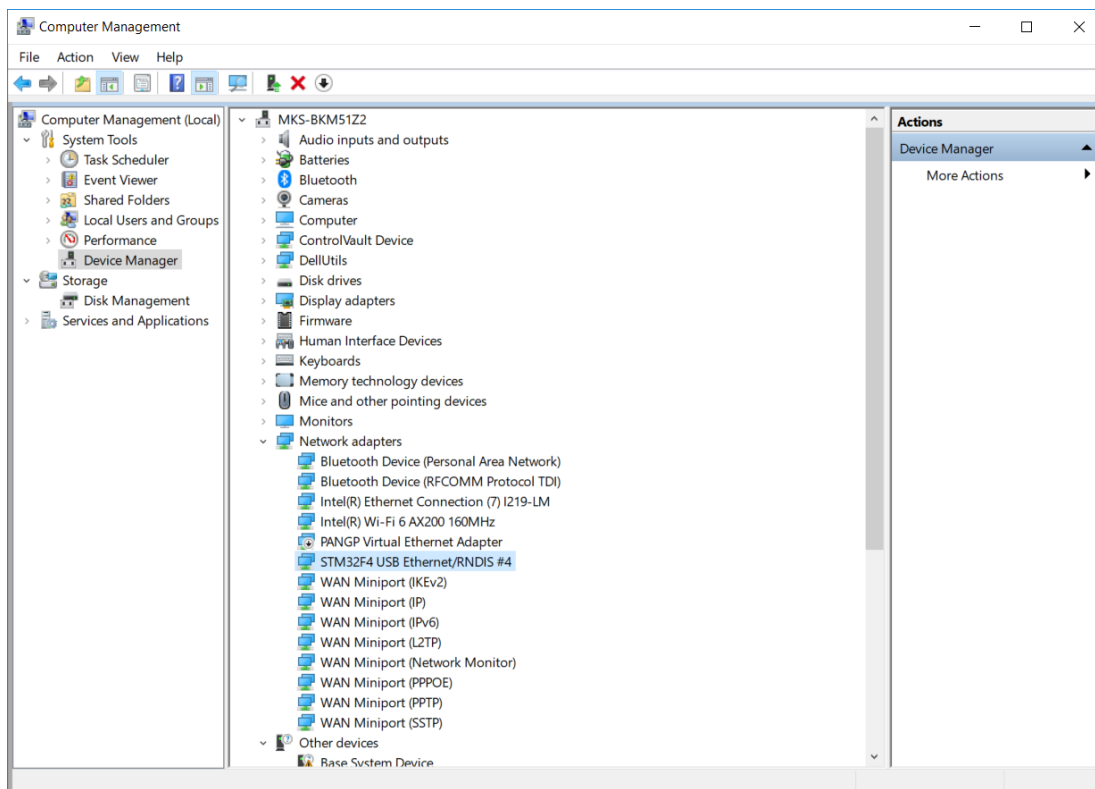
- Once the folder is selected, hit Next and the driver will load.
- A warning might appear asking if you trust this to be loaded in the computer. Select <Allow>



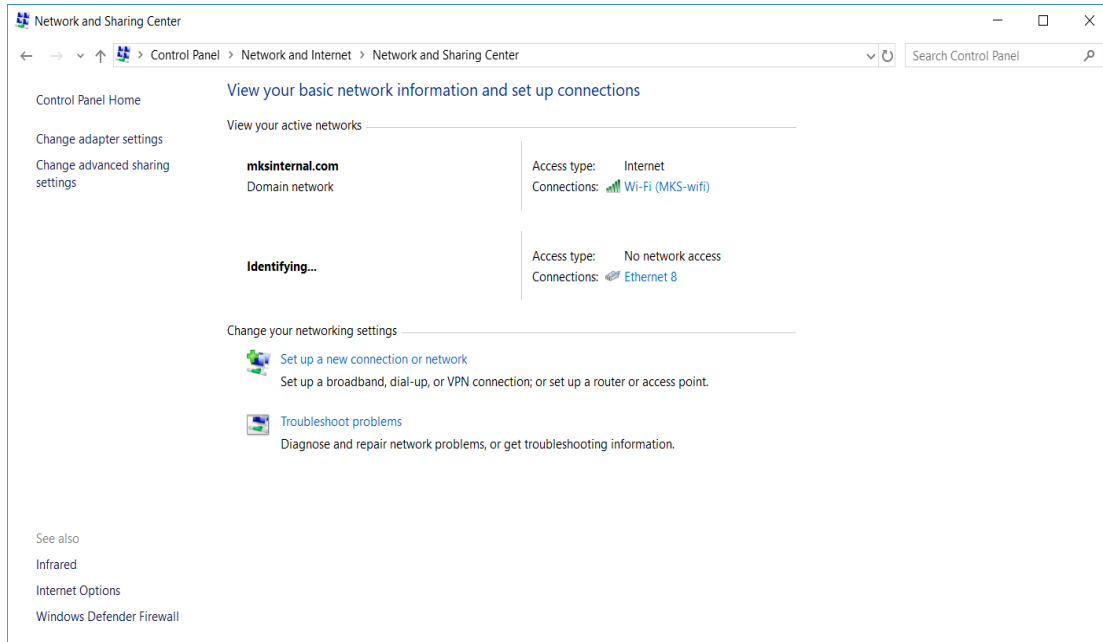


3. Establishing Communication to the Device

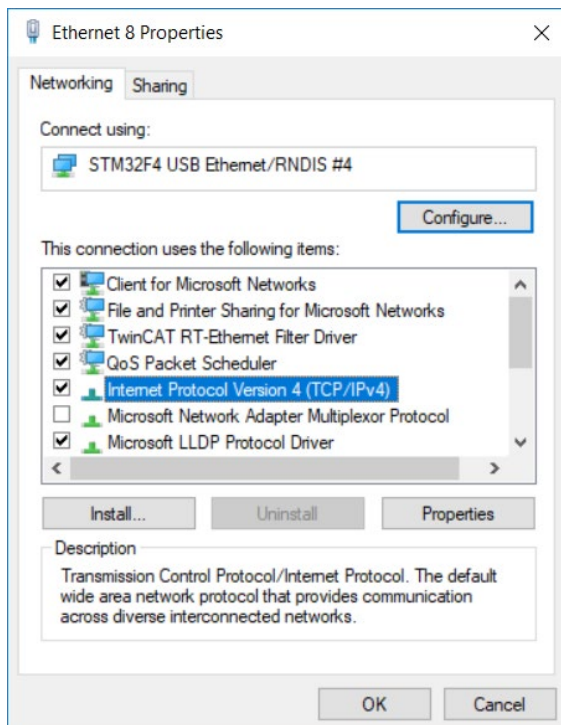
- Once the driver is loaded, check to make sure it has been updated to a <Network Adapter>



- To begin communicating to the device Web Browser, the NIC card being used needs to be setup properly.
- Go to <Network and Sharing Center>. Double click on the Local connection to open properties of the Ethernet connection.



- Select <Internet Protocol Version 4 (TCP/IPv4)> and click on <Properties>
- Select <use the following address> and type in a unique address for the NIC card in the format shown. Insert the <Subnet Mask> as shown below.



Internet Protocol Version 4 (TCP/IPv4) Properties

General

You can get IP settings assigned automatically if your network supports this capability. Otherwise, you need to ask your network administrator for the appropriate IP settings.

☐ Obtain an IP address automatically

☒ Use the following IP address:

IP address: 192 . 168 . 2 . 2

Subnet mask: 255 . 255 . 255 . 0

Default gateway: . . .

☐ Obtain DNS server address automatically

☒ Use the following DNS server addresses:

Preferred DNS server: . . .

Alternate DNS server: . . .

☐ Validate settings upon exit

Advanced...

OK Cancel

- Open Microsoft Edge or Chrome and type in the IP Address of the device. The default address is 192.168.2.155.